



COLDKIT
OPTIMA]

*Caring for
what you care for*



AVAILABLE IN 48H



EASIER TO ASSEMBLE



COMPETITIVE PRICE



**MORE CUSTOMIZATION
OPTIONS**

Introducing the new Coldkit Cold Room

Based on the needs of our customers, we have developed the new Optima cold room.

The Optima is equipped with innovative features whose purpose is to improve and facilitate the work of both the installers and the final customer.

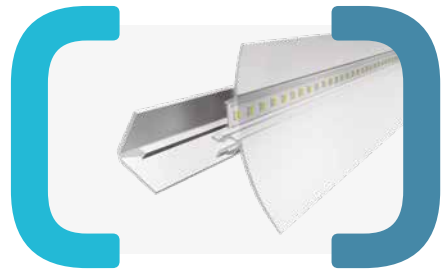
Easier to assemble due to its modular system with 4 angles

This new system, with 4 white colored, RAL 9010 / Ref.^a 1006 (option), injected vertical angles, offers more flexibility and better space optimization for the design of small cold rooms, as well as allowing layouts of large cold rooms, as possible with our Matrix cold room.



New optional lighting system

For the new Optima cold room we have create an LED lighting system integrated in the coving profile, whose energy consumption is minimal. In addition to its aesthetic innovation, it is easy to clean and avoids the accumulation of dirt on the lamps.



Lighting System

Available Heights

Optima is available with 2030mm (except for 120mm thickness) / 2230mm / 2430mm / 2630mm outside height.

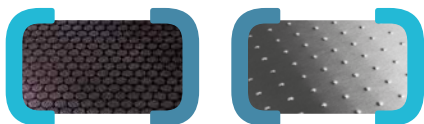
COLDKIT OPTIMA]

OPTIMA IS AVAILABLE IN TWO MODALITIES:

With flooring

The floor panels are reinforced and have resistant anti-slip phenolic resin coating and with Class 3 Anti-Slip Classification Certificate (the same required in outdoor swimming pool areas).

Optionally: Anti-slip flooring with stainless steel finish or super-reinforced flooring in both finishes recommended for especially high service trac. Both options count on an inner cladding in 10 mm plywood (CTBX), lined with a 0.6 mm-thick anti-slip stainless steel sheet for the inside of the chamber. The Reinforced Stainless Steel Floor also includes another 0.5 mm-thick lacquered sheet placed on the internal surface of the plywood.



Panel Features

Available thicknesses: 85, 105 and 120mm

Color: White, RAL 9010 / Ref. 1006 (Option)



**Negative
Temperatures**

in 4 exterior heights:

2m*	2,40m
2,20m	2,60m

Without flooring

Supplied with a special U-shaped PVC profile that facilitates quick installation and fixing. This part provides an interior and exterior skirting profile, ensuring simple assembly and an impeccable technical and aesthetic finish.

Panel Features

Available thicknesses: 85mm

Color: White, RAL 9010 / Ref. 1006 (Option)



**Positive
Temperatures**

in 4 exterior heights:

2,03m	2,43m
2,23m	2,63m

Modular and customisable

Adaptable to the needs of each business, the exterior finishes and internal layout at the customer's discretion.

Optima is based on a modulation of 200 on 200mm, practically in the entire range, excluding only some dimensions.

Installation in small spaces

Since Optima is assembled from the inside out, it can be installed without need for additional assembly space.

*Only 85 and 105.

Hinged door including panel frame

The doors, manufactured by Coldkit, are supplied in different sizes depending on the chosen cold room height. The jamb on the door panel can be positioned to best adapt to the characteristics of the installation.

All our hinged doors include a key lock, panic bar and right-left opening direction (mention in the order).

Sliding door available on request (only 85 and 105) with anodised aluminium guide rail with fixed handle, also made of aluminium.

With flooring Free passage:	Without flooring Free passage:
1810x700mm / 1810x800mm (thickness 105mm)	1900x700mm / 1900x800mm
1830x700mm / 1830x800mm (thickness 85mm)	2000x800mm (minimum frame height 2230mm)
1900x800mm and 2000x800mm (minimum frame height 2200)	The doors can be integrated in 1000 and 1200mm wide panels.



Lock detail



Hinged door included

Refrigeration system available

On request, the Optima cold room can be delivered together with a monobloc refrigeration unit to obtain a fully equipped assembly.

The standard monobloc is for wall mounting. Available also ceiling mount or split models.

Easy to assemble and disassemble

The fixation system between modules consists of two metal latches with anti-corrosion treatment, mounted on highly resistant PVC boxes. Steam barrier continuity is guaranteed by means of a polyethylene or silicone, guaranteeing adequate insulation. The fixation points form part of the same panel and do not require additional assembly parts. Fast and simple assembly, without any need for cutting.



Refrigeration system available

Sets cold rooms

The Optima allows to create sets of two or more cold rooms, adding partition walls with fixing by means of profiles.



Easy to assemble and disassemble



COLDKIT OPTIMA]



**OPTIMA 120
Standard Door**



**OPTIMA 120
Semi-inset Door**

Certifications

All Coldkit product factories have **ISO 9001** certification.

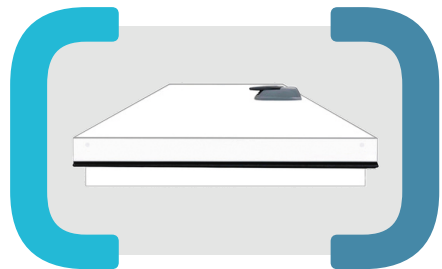
The panel of our cold rooms has CE marking (CE) and our panel is certified according to the European Euroclass system, which classifies construction materials in accordance with their fire reaction and behaviour, obtaining **Bs2d0 classification**.

The floor panels have a resistant anti-slip phenolic resin coating with **Class 3 Anti-Slip Classification Certificate** (the same required in outdoor swimming pool areas).



Optionally

Semi-recessed negative door, 120mm thickness (60mm external + 60mm recessed) for OPTIMA 120.



120mm (60+60)

Available in a fully equipped version

For each Optima model, there is a Coolblok aluminium shelving solution available that is composed of 4 levels, 470mm in depth and 1.670mm or 2.000mm in height. (Other depths available upon request).

Also available: strip curtains, pressure balance valves (for negative cold rooms), optional coving profile and emergency equipment.



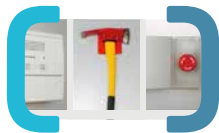
Strip curtains



Pressure balance valves



Coving profile



Emergency equipment

Coolblok

The modular shelving system that will keep the working areas of your hospitality business organized.

- Sturdy construction that adapts to different layouts
- Easy assembly
- Flexible modular system
- Easy to clean: NF Certified in Food Hygiene
- Modular and customizable
- Variety of sizes: standard and Gastronorm shelves

Coolblok shelving systems are compatible with Optima cold rooms.



Cold room interior with Coolblok Shelving

